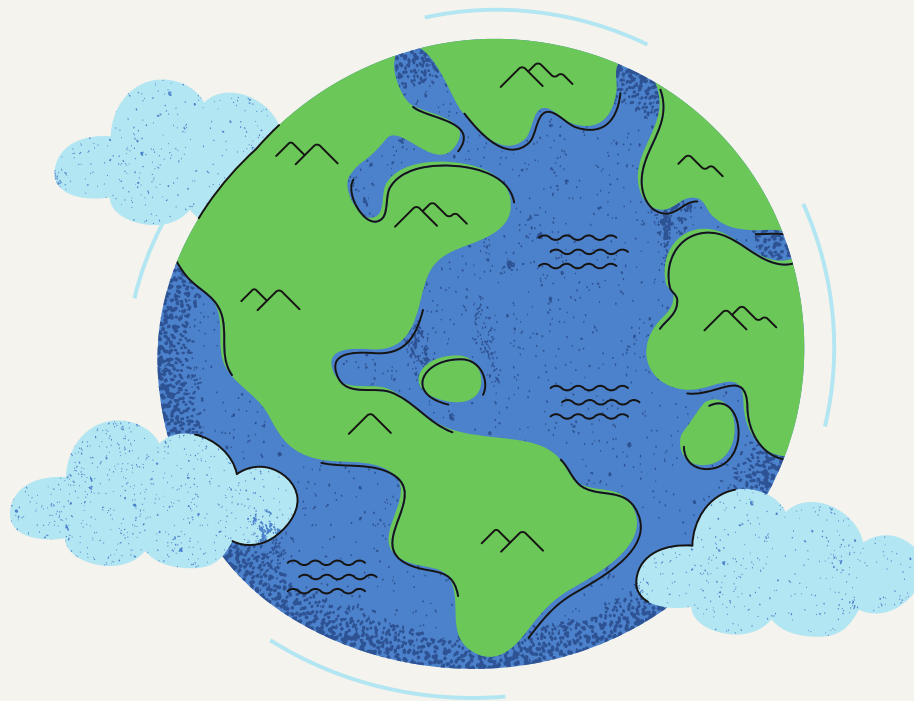


SOCIAL WORK & CLIMATE CHANGE

What is climate change?

Climate change is the long-term shift in weather. Current change is human-caused. Greenhouse gas concentrations are at their highest in 2 million years.



Environmental impacts affect every region across the world and include droughts, fires, rising sea levels, stronger storms, and declining biodiversity.

We must limit temperature rise to no more than 1.5°C (about 2.7°F).
Every degree counts.



Grand Challenges
for Social Work

WHY SOCIAL WORK?

Climate change exacerbates inequities
in power, privilege & oppression.

About 216 million
people globally
are likely to be
displaced by 2050
due to climate
change.



People with mental
health challenges
are 3x more likely
to die from heat
waves.

Indigenous tribes have a 47% higher
wildfire risk on lands they were
forcefully relocated to compared to
their unceded lands.

WHAT NOW?

Find hope in our collective commitment and the possibility of a more equitable and regenerative future.

Talk about it at work, at home, with friends and family, in your community, and with your legislators.

Take action through community organizing, policy advocacy, and climate-informed case management.

Infographic Design by...

Rea Pareja, Colleen Cummings Melton, Lisa Reyes Mason
University of Denver, Graduate School of Social Work